

HORNINGSHAM

NEWS

ISSUE 220

March 2019



SUNLIGHT
WINDOW CLEANING

We clean frames as well as glass. We also clean
Conservatories, Conservatory Roofs, Inside Windows,
Solar Panels and Gutter Clearing
Call Doug Valentine
Tel: 01373 837423
Mobile: 07739 189180
doug.valentine8@gmail.com

Horningsham Village Hall



Competitive Rates & Residents Discounts

Hall Hire - bookings@horningshamvillagehall.com
Event queries - enquiries@horningshamvillagehall.com

Kerrie & Co
Cleaning, Ironing and
Laundry Service
01373 463456
07812 202206



Learn to drive

with your local instructor



call tina

01985 988578

mobile 07745 652777

THAI KITCHEN

Special Lunch Offer for 2018
10% Discount with this Ad

Open for Lunch
Tues – Sat 12 – 2.30 pm
Evenings Friday & Saturday
6.00 – 10.30pm

We also do takeaways

Bookings:
01373 467370
james@thaikitchenfrome.com
www.thaikitchenfrome.com

FUNERAL DIRECTORS
F. CURTIS & SON
11 PORTWAY WARMINSTER
TEL 212033

Bed & Breakfast
and
Self-Catering Cottage

Stephen & Margaret Crossman

Mill Farm
Horningsham
Warminster
BA12 7LL
01985 844333



EDITORIAL

Our wonderful cover photo this month was sent in by reader Paul Kemp and shows Horningsham looking like a Christmas card. Yet, as we went to press, the unseasonably warm weather meant that temperature records for February were being broken – such is the variability of our weather. We had many splendid photos of Horningsham in the snow posted on our Facebook page and our centre pages feature some of the best.

Several of our regular items are missing this month but you can still read about the planned forthcoming activities of our two newest groups – the W.I. and the Lion Cubs Playgroup. As well as the Parish Council report there is news of crocodiles arriving at Longleat and the latest instalment of the Mill Farm Chronicles. Jayne Glover’s regular tree column has timely information about pollen and we also have her recipe for Welsh cawl, though you may not want to copy her recently acquired taste for drinking bone broth. Number 54 in our *Then & Now* series features Bakery Farm – 179 Chapel Street home to the latest in a 130 year long line of Chapmans.

Tim Hill

Please send your contributions for the next edition by Friday 15th March 2019

Email: horningshamnews@hotmail.co.uk

Editorial Team

Tim Hill	844365	Chrissie Buttery	844622
Helen Taylor	215906	Gill Courtney	844411
	James Osborne (<i>Treasurer</i>)	844711	



find us on
Facebook

We now have 598 “Page Likes” – well over three times the number of printed copies!

Printed by Parish Magazine Printing (01288 341617) printers of community magazines.

HORNINGSHAM PARISH COUNCIL

Horningsham Parish Council met on Thursday 21st February at the Village Hall.

Present: Councillors: Tim Hill, Stephen Crossman, Ken Windess, Michael Trollope, Fran Chris, Simon Millar, Matt Simpson, Dermot Fitzgerald, Gerard Brierley, John Radley and Charlotte Hilleary

In attendance: The Parish Clerk Mrs. Sarah Jeffries MILCM

Public Question Time

Mr Jon Timney Longleat Director of Estate, Property and Maintenance introduced himself and gave an over view of his background. He previously worked for many years at Bourne Leisure Ltd. which owns Butlins, Haven Leisure and Warner Leisure which operates 13 hotels across the country. Longleat's management has been restructured and his role involves responsibility for the Estate and the properties, including Longleat House. He is keen to establish effective communication and, as part of that, will wish to attend meetings of Horningsham Parish Council. The Chairman thanked him for his contribution and said the Council looked forward to working with him in his new role.

Mr Peter Wellstead, Chair of the Hall Committee, spoke to a letter his Committee had sent to the Council regarding what he felt was a lack of communication about the Play Area. The Chairman said he was sorry that the Hall Committee felt that way and pointed out that there had been much communication over the very many years that the Play Area project had been in development. He also mentioned that the Council had a representative on the Hall Committee who had on many occasions kept the Hall Committee abreast of the project's progress. The Chairman added that he would make sure that the Council would additionally communicate with the Hall Committee Chair as the project progressed. Councillor Stephen Crossman said he would make good any damage to the field that was caused during the construction of the Play Area.

Planning

Planning Applications

Application Reference: 19/00327/VAR

Application for Variation of Condition

Proposal: - Removal of Conditions 2 and 3 and Variation of Condition 9 of planning permission 16/01076/FUL to reflect omission of bridges and minor amendments to the layout of paths

Location: Land Adjacent to Longleat House, Longleat, Warminster, Wiltshire

Council unanimously supported the application.

Application Reference: 18/11939/VAR

Application for Variation of Condition

Proposal:- Variation of conditions 2, 3 & 4 of planning application 14/07770/FUL, to regularise as-built attraction (Removal of part of existing single story building with extension to existing barn to provide new animal attraction ride with associated landscaping)

Location: Longleat House, Longleat, Warminster, Wiltshire, BA12 7NN

Council had previously supported this application under delegated powers between meetings.

Planning Appeal

18/04364/LBC 212 Pottle Street Horningsham BA12 7LX

Correspondence had been received from Wiltshire Council concerning an appeal against the refusal of listed building consent. The Parish Council had no comments to offer.

Parish Steward

The Clerk reported that under the new arrangement she had direct communication with the Parish Steward which is a welcome improvement. Council noted how much had been achieved recently by the new Parish Steward in the minimal time available for work in Horningsham.

Community Litter Pick

Councillor Fran Chris reported that arrangements were in place for this year's Litter Pick on Saturday 6th April from 10am to 12 noon from the Village Hall. The Clerk said she would produce posters that could be displayed around the village to draw attention to the event.

Asset Maintenance – the Bus Shelter

The Clerk confirmed that the insurance company was in possession of the necessary documentation concerning the damage to the bus shelter. It was agreed that Councillor Ken Windess would submit a quotation for replacing the shelter.

Play Area

The area has been levelled and the materials and play equipment has been delivered. The contractor, Creative Play, has confirmed that they aim to start work on Monday 25th February and will complete the installation in an estimated 12 days. Council decided that the fence to the tennis court will be located in its previous position and that the palisade fence will now enclose all four sides of the area. The Play Area will not be able to be used until the grass has grown and the site has been inspected for safety and approved by RoSPA.

Defibrillator Training

The date previously selected for the annual training event was unavailable and a new date of Thursday June 13th was chosen.

***The next meeting of Horningsham Parish Council will be on
Thursday 4th April at 7.30 in the Village Hall.***


All are welcome to attend.


HORNINGSHAM CONGREGATIONAL CHURCH



Our next service will be held on Sunday 10th of March at 10.00 am

Carol Cox 07584 825421 horningshamchapel@aol.co.uk



 Follow 'Fostering in Wiltshire'

Could you offer a stable and supportive home?

We need foster carers who can provide a loving, supportive home for children in care. We will provide you with suitable placements to match your circumstances. You will be part of a professional team and be provided with your own support worker, ongoing training and a 24 hour helpline. In addition, you will be paid a generous allowance.

Interested?

Call us today on **0800 169 6321**,
email fostering@wiltshire.gov.uk or
go to www.wiltshire.gov.uk/fostering

Be the difference – become a foster carer with Wiltshire Council



Wiltshire Council
Where everybody matters



A big welcome to two new arrivals:

Maddy Wood and James Sleeman have moved to the Manse from Frome, where Maddy has a hair-dressing salon in Vicarage Street. James, originally from Cornwall, is a master craftsman in carpentry, making timber-framed buildings and bespoke furniture.

Rebecca Page and Luke Mason have moved to 112 Anchor Barton. Luke is Park Supervisor for Longleat, and Rebecca is a para-legal with a law firm in Bath. They are both keen gardeners.

Maggie Osborne

HORNINGSHAM W.I.



Living on a narrow boat, navigating the canals of Britain; a different pace of life and view of an area. At our last meeting, thanks to Susan Waldron, we learnt all about it. Fascinating to simply find out how many different types and styles of locks there are to overcome.

Upcoming Meetings

Tuesday 5th March – Jewellery making

Demonstration and the chance to have a go

Tuesday 2nd April – AGM

A more formal meeting but do come along to meet the group and find out more about us.

Tuesday 7th May - Life of an auctioneer

Gordon Brockman shares his entertaining experiences

Tuesday 4th June – Lebanese cookery

A demonstration accompanied by ample tasting opportunities

Meetings are free for WI members, Guests are £3 per meeting.

If you are interested in joining us and would like to come along to a meeting then please get in touch. We meet on the first Tuesday of each month at Horningsham Village Hall, normally at 7.30pm. You don't have to be a village resident to join us and you are welcome to bring a friend. You can reach us at wihorningsham@gmail.com or on 01985 844801. Please let us know if you are planning to come along so we can be expecting you.

Caramantha Wellstead
President Horningsham W.I.

Dear Friends,

I am writing this letter at the end of a beautiful day; when I walked the dogs there really was the smell of spring in the air and I saw the brilliant yellow of daffodils for the first time. When you read this, spring will have truly sprung although having said that, we might be encased in a mountain of snow such is the fickleness of English weather. Anyhow, the light is returning, the bulbs are opening and the winter sunshine is gaining more strength every day.



This month in the church we observe the beginning of Lent with Ash Wednesday when the sign of the cross in oil and ash is made on people's foreheads. To be honest, not many people come to the Ash Wednesday service, which is a shame as it is a very thoughtful and moving occasion. In towns and cities churches quite regularly take the ash and oil out onto the streets and offer the ashing as it is called to passers-by. I love that idea as I think the church needs to stop hiding itself away and get out there where people are. It's not quite the same in villages though, is it? There's not exactly loads of people wandering about and in the places people gather, like our pubs, it wouldn't go down well if I turned up with my oil and ashes. If you want to read a wonderful book telling the story of what happened when a church did 'get out there' read 'City of God' by Sara Miles; this is what the blurb says:

City of God is a captivating account of venturing beyond the borders of church -It tells the story of one day in Sara's ministry: Ash Wednesday, when she takes a bowl of ashes from her local church to public places including bus stops, bakeries, beauty shops, fast food joints, hospital waiting rooms and street corners. She invites strangers to receive the sign of the cross on their foreheads, and offers blessing to waitresses and drunks, mothers and babies, believers and doubters alike.

It would be wonderful if some of us read the book and then got together to discuss it, in the pub or something; if anyone fancies doing that do get in touch with me.

Why is Ash Wednesday so important? Well, because it reminds us that we are dust, in other words, one day we will die, that is what it means to be human, and we are very bad at talking about that in our society. It reminds us that being human involves getting things horribly wrong and that now and again we need to acknowledge the reality of that. But mostly, and above all else, it reminds us that we are loved, we are loved, we are loved; the oil of healing is for all of us no matter who we are or what we have done

I finish with another quote about the book:

Where most aim for the clouds, Sara's focused on the dirt and sweat and blood and struggle of this world and the presence here in it with us – which is, of course, the best news of all.

Love and prayers,

Pauline Reid revpauline@btinternet.com

PARSONAGE FARM RAINFALL

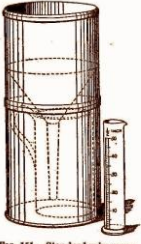


FIG. 161.—Standard rain-gauge.

January started cold with clear skies during the day, which gave us frosty mornings, some quite hard. This soon ended with dull damp days and cold, with the odd sharp showers and by the 22nd we had 1.04 inches. The wind then started to pick up, making the days even colder, with sleet/rain on the 29th and on the 31st we had a very hard frost with a harsh wind making it very cold. Then we had all that snow on the first of February. The total rainfall for January 2019 was just 1.04 inches compared with 3.73 inches for January last year or 5.37 inches in 2016.

John Whatley

HALL NEWS



Horningsham Village Hall available to all
£15 an hour (minimum 3 hours hire)
Wedding packages available

Bookings can be made online via our website: horningshamvillagehall.com

Louisa Cruickshank

The Big Horningsham Litter Pick

Saturday 6th April

At the Village Hall

10 am – 12 noon

Bags, High Vis. Vests & Grabbers Provided

Please come and clean up our village!





Young Voices

Owls class had a phenomenal time singing as part of an 8000 children's choir at the O2. They sang their hearts out, having learned a range of songs from different genres in the months leading up to the event. They did us all proud performing alongside professional musicians (including Tony Hadley, which was particularly exciting for some of the staff and parents!).

They also got to watch performances by the guest singers and Urban Strides; a street dance group. It was incredibly inspiring and a memorable event for everyone.



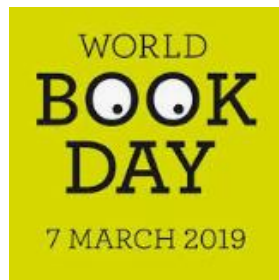
Dance Festival

This year's dance crew were amazing at the annual Dance Festival, performing at Bath Forum. The theme was 'Love is..' and the children told Flo's story through dance. It was truly beautiful and bitter sweet that Flo herself could not perform as she unfortunately was in hospital and not well enough to join us. They all did her proud though and

there wasn't a dry eye in the house! A total of £1,401.55 was collected throughout the interval for Clic Sargent to support children with cancer.

World Book Day

We always celebrate this annual event, dressing up and enjoying good books together! If you would like to come in to school and share a book with groups of children the afternoon of Thursday 7 March, then please contact the school by Tuesday 5th March on FriendsofHPS@horningsham.wilts.sch.uk or 844342. Feel free to dress up too if you like! Apologies in advance for the staff costumes!



Upcoming Events:

As well as World Book Day, FOHPS have planned some events over the next few months which we hope you may enjoy! Please contact the school if you want to join us– updates with further details will be published on our website from the beginning of March. If you would like to help organise or run an event for FOHPS then please contact us via FriendsofHPS@horningsham.wilts.sch.uk or 844342.



BINGO NIGHT

22 MARCH | HORNINGSHAM VILLAGE HALL 6.30PM

FUN FOR THE WHOLE FAMILY | REFRESHMENTS & GREAT PRIZES

See Horningsham Primary School Website for further details
<http://www.horningsham.schnet.org>

The advertisement features five colorful bingo balls (green, blue, yellow, red, purple) with the letters B, I, N, G, O on them. The text is in blue and green colors.

HORNINGSHAM MARATHON CAFE AND RUN

MARATHON CAFE
2K or 5K RUNNING CHALLENGE
AROUND HORNINGSHAM
SPORTING ACTIVITIES FOR CHILDREN

Sunday 28th
April 2019

FOHPS Friends of Horningsham Primary School

The advertisement features a silhouette of a runner against a sunset background. The text is in white and yellow colors. A small circular logo for FOHPS is in the bottom right corner.

Mill Farm Chronicles January – February 2019

The sun is shining, the sky is blue and it's warm sitting outside our front door whilst having a cup of coffee, dare I whisper that spring is here?

The snow at the end of last month was great and didn't last long enough for it to start causing much trouble, for us at least. We were warned that it was coming so we were fully stocked up with food for us and the animals and we were able to enjoy the quiet interlude of no traffic through the village and not being able to do much else other than sit by the fire and watch TV.

The snow disrupted and cancelled the Longleat 10k which was due to be run on the Sunday but obviously conditions underfoot were too treacherous to allow the public to run. We had a regular guest staying with us who runs the 10k each year but also runs numerous other marathons too. He arrived on the day of the snow . . . on foot . . . having walked from Warminster. He was pretty nonchalant about it having taken 3 hours and just said walking in snow was good training for his next marathon in Paris. He's a very fit man!

The snow also meant that the Beaters' Meal which I was due to cater for, also had to be cancelled. I don't think many people, even hardened outside people like the beaters really wanted to be traipsing around the countryside in that amount of snow. I was left with peeled carrots and potatoes for 75 which I didn't want to go to waste so a vast vat of carrot and coriander soup was made, some bags of roast potatoes went in the freezer and we had mashed potatoes and carrots for practically every meal for a few days. At least we won't die of scurvy and I can see really well in the dark now!

Once the conditions got better, Steve started the annual hedge trimming. We are not allowed to cut hedges after February 28th so that the nesting birds aren't disturbed. Steve has also repaired our ring rollers and has started rolling the grass fields today.

The calving has kicked off properly now and to date we have had 6 calves so far from our first-time heifers who were artificially inseminated last year. Steve is really impressed at what naturally good mums they are all turning out to be.

Do you remember last month we had a cow give birth too early to a dead calf and that the calf was being tested by Vets? Well unfortunately it turns out it was due to a disease called Neosporosis which is caused by the parasite Neospora caninum and is caught by the cow ingesting food that is contaminated with Neosporin infected dog poo. The eggs in the excreted poo can remain stable in the environment for about 6 months and can be present in grass or silage or hay. Neosporosis causes abortion in cattle but no adverse effects to dogs.

Now it's not to say that every dog has this parasite in their stomach or that responsible dog owners don't clear up their dog poo but to give us and our cows the greatest chance of giving birth to healthy, full-term calves we are asking every dog walker NOT to walk through our fields with your dogs please. It might be only a field to you, but to us it's the tool of our trade and we can't afford to have them littered with even a small amount of infected dog poo. I'm sure you will all understand where this request is coming from, thank you.

Amy and I had an amazing time in Barcelona. The weather was dry and sunny if a bit chilly towards the end of the day. We visited every tourist attraction Barcelona had to

offer including the jaw-dropping La Sagrada Familia (a Church, Temple, Cathedral, Basilica?) that is huge and has modern mixed with ancient architecture. Amy and I took a lift up one of the towers to the roof. Spectacular views across the roofs below us admittedly but we weren't told until we were in the lift that we had to walk down. 500 tiny spiral stone steps from top to bottom . . . that was interesting! I was concerned that the very elderly, heavy breathing, wobbly American gentleman in front of me would keel over before he made it to the bottom and Amy was concerned that the tiny child behind her would slip and fall down the unfenced central drop. Thankfully we all made it down safely.

The building of La Sagrada began 137 year ago and isn't due to be finished until 2026. It was the brainchild of the architect Antonio Gaudi who has designed and built several other weird and wonderful buildings in the city which we



also visited. We took in a wax work museum, an art gallery, where I saw my first Picasso, an enclosed Spanish Village which is basically an open-air museum which showcases replicas of houses from all over Spain and regional craft workshops and a wonderful indoor food market. (The cakes . . . oh my word!) Amy and I walked 35 miles in 4 days as well as using the Metro a lot (really clean, big and efficient) and also buying a 2-day ticket for one of those hop on, hop off bus tours.



I would recommend a visit to Barcelona to anyone, but the 2-hour flight delay was a bit of a damper at the end of it all, although I'm glad EasyJet decided to replace our intended plane, with a new one flown down from Gatwick, when unidentifiable fumes started coming out of the air conditioning!

Margaret Crossman

THEN & NOW



We are back at Bakery Farm, 179 Chapel Street. Our two photographs are separated by about 100 years. The building looks much more attractive in the old photo. The masonry has been covered by cement render which gives it a drab appearance. The thatched roof has been removed and replaced by tiles like so many houses in Horningsham. When the roof was tiled, the timbers were taken to the pickling tanks to be treated with creosote, now a restricted use substance in the EU due to the harmful effects of its vapours. The creosote then stained the newly replaced ceilings and seeped through the nail holes in the metal foil used to line the plasterboard. Until the latest re-roofing in 2018, creosote could still be smelled upstairs and brown streaks are still visible on the outside walls.

Through the censuses we can trace the varied uses of 170 Chapel Street. In 1841, the tenant was Elizabeth Thorne, a “Grocer”, the widowed daughter-in-law of the owner of the chair factory just along the road at Tompkins Pool. In 1851 she was now described as a 48 year old “Publican and Grocer”. By 1861 she was a “Grocer and Beer Seller” and in her last census entry in 1871 she was again just a “Grocer”. In the 1881 census, there was a new tenant, Ann Trollope, a 52 year old widow who was described as a “Baker”. She was followed in 1890 by the first of a long line of Chapmans.

*

George Chapman, aged 46, moved in with his wife Mehetabel (52) son Edward (16) and daughter Ada (14). George was described as a “Baker and Farmer” and this is the first time that No. 170 was a farm as well as a shop and bakery. Edward was employed in farming by his father, while Ada was a “Baker’s Assistant”. By the time of the 1901 census, they were all still there but Edward is now shown as a “Baker”. In 1911 George and Mehetabel are still at Bakery Farm while son Edward has married Edith Smith and they have a 1 year old son, Arthur. They are living just along the road at No. 156 with Edith’s widowed mother. Edward now describes himself as a “Journeyman Baker”. At some point, Edward took over the business until he retired in the early 1940s and handed over to his son Arthur and his wife Jessie.

Thanks to the current tenant, Roy Chapman, we have an insight into the operation of the business. The farm supplied milk and butter as well as home-cured bacon from the pigs they kept. Bread was delivered around the village and beyond several times a week. We can now reveal the trade secret of why the bread stayed fresh for so long – the dough contained potato. At the end of the week fruit dough and lardy cakes were specially baked in the wood-fired oven. The fuel consisted of hazel faggots from the Longleat Woods Department.

The shop continued into the 1960s and the farm ceased in 1969. When Jessie died in 1999, son Roy and his wife Christine moved in, which means that Chapmans have lived here continuously for nearly 130 years.

** Mehetabel is not one of those old names that have recently become fashionable again! It means “whom God makes happy” and, in a severe test of Biblical knowledge, is the name of the wife of Hadad, king of Edom (Genesis 36:39).*



CLIFFORD T. SHEAN LTD

ELECTRICAL CONTRACTORS

Tel:01373 318005 email: office@cliffordtshean.co.uk

Website: www.cliffordtshean.co.uk

- Free no obligation estimates
- Domestic, Commercial & Agricultural Installations
- Part & Full Rewires
- Heating & Under Floor Electric Heating
- Lighting Installations
- Installation and Periodic Certification
- PAT Testing



**DRIVE IN
AND PICK
YOUR OWN
FIREWOOD**

**Woodchip, Mulch, Hardwood
Logs, Softwood Logs, Kindling,
House Coal, Smokeless Coal.**

Delivery available.



Mon to Fri: 7.30am - 4.15pm
Closed on Sundays & Bank Holidays
Open Saturdays from Sep-Mar only until 12noon
☎ 01985 213507 🌐 www.longleat.co.uk/forestry



**LONGLEAT
FORESTRY**

5% Discount for Tenants of Longleat Estate



Michelle Lyons



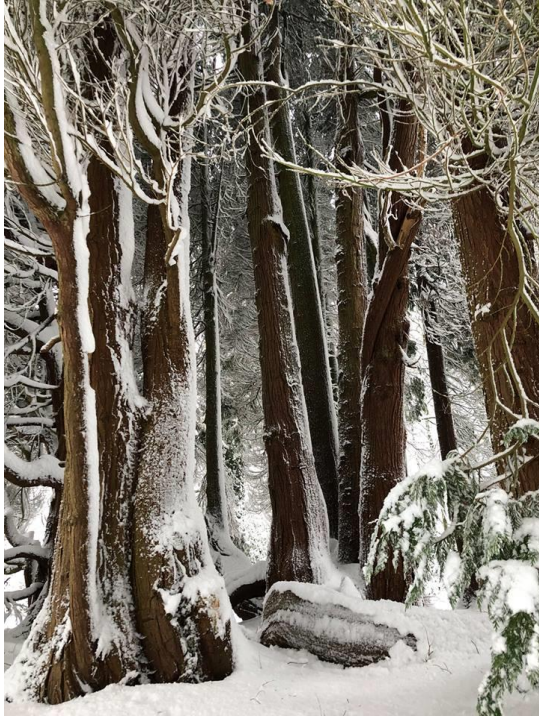
Sanaya
Joshi



James
Osborne



Mark
Challinor



Caroline
Dykes



Chapel Street Paul Kemp



Caroline Dykes



Haskell's Lane James Osborne

LION CUBS PLAYGROUP

Dates for your
diary

7TH MARCH - CRAFT ACTIVITY

14TH MARCH - CRAFT ACTIVITY

21ST MARCH - CRAFT ACTIVITY

28TH MARCH - LONGLEAT WALK

MEET OUTSIDE THE BATH ARMS, HORNINGSHAM

EMAIL: LIONCUBSPLAYGROUP@GMAIL.COM

FACEBOOK: LIONCUBSPLAYGROUP

Now **£1 Per Child**

0-4 YEARS £1 PER CHILD

HORNINGSHAM VILLAGE HALL - THURSDAYS DURING TERM TIME - 9.15-10.45

Notable Trees

The Importance of Being Earnest

We talked recently of the beauty of trees with no clothes on, the secrets that they give away that are hidden when in leaf. At this time of the year one of the loveliest signs of rejuvenation surely has to be the catkin and they are abundant this year. The purpose of these decorative adornments is quite simple - pollination. We tend to think of abiotic vectors such as insects and animals as being the most successful way of pollination however it can be erratic in its nature due to the success or failure of its own population (think of bees and butterflies). I am always glad when I see my first bumblebee of the year! Now, abiotic vectors such as wind and water are surprisingly common. Wind pollination (or anemophily) is effective when insects are rare or even absent. However wind-pollinated species like good survivors adapted to produce huge volumes of pollen to hit the target.

Let me quote here one of my favourite books 'The Natural History of Pollination' by Proctor, Yeo and Lack; Harper Collins. 1996. ☺

"If effective pollination requires no more than one pollen grain to reach a stigma with an area of one square millimetre, every square metre of the plant's habitat must receive around a million pollen grains to make pollination reasonably certain. In fact pollen production is ample to achieve this sort of density. It has been estimated that a single birch catkin produces about five-and-a-half pollen grains and a hazel catkin nearly four million (Pohl, 1937)

(My daughter suffered from hay fever from a very early age and it always started around February, March. The pollen rain from birch was held to be responsible).

The importance of being earnest about pollination is plain to see, the physiological effects of climate warming yields consequences for plant pollinator networks. Remember the heat last summer, the large amounts of rain we are growing used to. Pollen is a necessary evil in the lives of hay fever sufferers. Knowing thine enemy may help but life without pollination ?

Everyone's future flies on the wings of pollinators



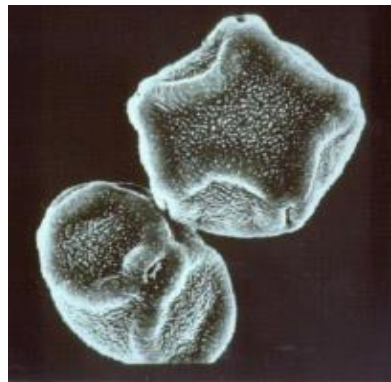
10 Things you may or may not know about a very big subject made small

1. The people of biblical and classical times accepted that bees played a role in the production of honey. Full Stop no more curious than that.
2. Apparently Theophrastus (c.373 - 287 B.C.) gave an 'excellent' account of fertilisation between date palms.
3. Discovery of the importance of pollination took place as recently as 17th C. The same major century of European Science that saw the discovery of the circulation of the blood by Harvey, the establishment of the Royal Society of London and the *French Académie des Sciences*, and Newton's discoveries in mechanics, mathematics, optics and astronomy

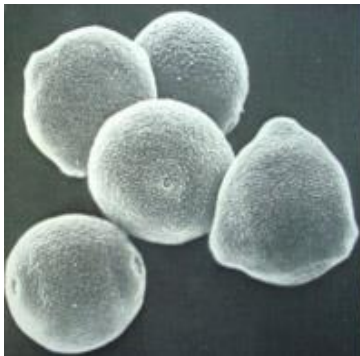
4. Richard Bradley (Fellow of the Royal Society and Professor of Botany in Cambridge) describes his experiments in his *New Improvements of Planting and Gardening*, published in 1717 to include his research on hazel catkins.
5. Wind-dispersed pollen grains have a smooth dry surface compared with the sticky and highly ornamented grains that are often seen in insect-pollinated species.
6. Most wind-pollinated species have adaptations that prevent the release of pollen under perfectly calm conditions.
7. Check out allergenic pollen types on the National Pollen and Aerobiology Research Unit site.
8. www.countryfile.com/wildlife/trees-plants/how-to-identify-catkins
9. www.fs.fed.us/wildflowers/pollinators/documents/simpletruthbrochure.pdf
10. <https://gapp.org/>



Betula spp (Birch)



Alnus spp (Alder)



Corylus spp (Hazel)

Pictures from the National Pollen and Aerobiology Research unit at my *alma mater*
University of Worcester

Jayne Glover

LONGLEAT NEWS



A stunning scale model of Longleat House has been painstakingly restored after being broken up into more than 50 separate pieces.

The intricate 1:25 model, which was originally commissioned by the 6th Marquess of Bath, first went on display at Longleat in March 1989. However it was dismantled into over 50 individual pieces and put into storage when the building it was in, the Estate's former butchers, underwent renovations in 2012. Now, almost exactly 30 years to the day, it is back on show to visitors.



The restoration of the scale model was overseen by Kim Ward, a former apprentice of Spaniard Jordi Fontanals, who built the original model. Kim, 60, from Scale Model Makers, has spent the past two months restoring it to its former glory with the help of a six-man team. “When we found it, it was like a jigsaw - it must have been in 50 pieces. It was covered in 30 years of grime and even bird poo!” said Kim. “We’ve restored damaged bits and even rebuilt sections of the model as well as giving it a thorough clean. The one new addition is the bronze lion which was not there when the original was made.”



The model was created by Spanish-born architectural model-maker Jordi Fontanals, who was based in Castle Cary. He was tasked with building a miniature version of Longleat House for a Belgian theme park which was creating a mini-city of the most iconic buildings in Europe. Alongside Longleat the list also featured the Houses of Parliament, the Royal Crescent in Bath and William Shakespeare’s birthplace in Stratford-upon-Avon.

Lord Bath visited Fontanals’ workshop when he heard about the model and commissioned him to build an exact replica. Mr Ward, who was trained by Fontanals in the mid-1970s, said it was a ‘privilege’ to restore the original model.

The Bruparck, in Brussels, is still open to the public and boasts 350 model buildings representing a total of 80 European cities.

MONTHLY RECIPE

Welsh Cawl



Recently I inadvertently became part of a ‘trend’, a ‘movement’ or a ‘fad’! So unlike me ! I have always been interested in ‘functional foods’ ;- foods that have a potentially positive effect on health beyond basic nutrition. A good example of this is porridge known to contain soluble fibre that can help to lower cholesterol levels. However it is a complex subject and even though my BH and I share a biologically scientific background we agree to differ on this. Somehow, while I was mooching about on the Internet I bumped into ‘Chuckling Goat’ and subsequently read “Secrets from Chuckling Goat: How a herd of goats saved my family and started a business that became a natural health phenomenon”. The main thrust of Shann and Rich Jones’ family business is goats milk kefir, (Not the stuff you get in supermarkets which may have added bleach) made with live kefir grains containing 9 strains of friendly bacteria.

To get to the point! I decided in the New Year to give myself a quinquennial review as my 7th decade looms. I am taking 170 mls of kefir a day and 250 mls of Bone Broth. Now we get to the crux of the matter !

☺ ‘Bone Broth’ I didn’t get where I am today without knowing how to boil bones for stock, both for economic reasons and as the foundation for

flavour in numerous recipes, but I have never intentionally imbibed 250 mls of washing up water as my husband describes it. I hasten to add that I have not yet managed to persuade him to try it ! It seems relevant at this time of the year to provide our bodies with the necessary tools to repel seasonal invaders, especially coughs, cold and flu that do not respond to antibiotics and bone broth has earned the reputation of being ‘Jewish penicillin’ for all manner of reasons, but bone broth is found for similar reasons throughout the world. The contents of bone broth provide a valuable range of nutritional benefits from collagen to glycine that may help with a variety of health conditions. No, I’m not trying to brainwash you! Would I? But there is a whole lot of positive info out there to back it up. Come and get it! Read all abajt it!

Anyway here is Shann Nix Jones’ recipe for CAWL (pronounced ‘cowel’ like towel) a traditional Welsh soup that goes back to the 14th century

Shann says “that the secret to a good cawl is time - it can happily simmer away on its own without any input from you”

Ingredients

Leftover roast meat with bones, a chicken carcass, beef or lamb. Pork is not recommended as it is too greasy.

2 tsps salt, 5 black peppercorns, 3 onions, 4 carrots, 4 potatoes, 1 swede, 1 leek

Method

Put the meat into a big pan, fill three quarters full of water and then add the salt and the peppercorns. Bring to the boil and then simmer for at least 2 hours but the longer the better

Put a colander into another large pan and sieve the broth into the new pan leaving the bones and the meat in the colander. Return the broth to the heat and simmer. **If you want to drink a mugful this is the time to do it.** Peel and roughly chop the veg but not the leek and add them to the broth continue to simmer. Remove the meat from the bones and add. The sliced leek should be added about half an hour before serving the cawl. Switch off the heat and allow to cool for ten minutes before plating up.

Bwyta da!

Dydd Gŵyl Dewi Hapus

Jayne Glover



LOCAL FINANCIAL ADVICE

Tailored specifically for you

Charles Derby are locally based fully qualified financial advisers who can help you with:

- SAVINGS AND INVESTMENTS PLANNING
- TAX EFFICIENT INVESTING
- PLANNING FOR SCHOOL FEES
- RETIREMENT PLANNING
- PROTECTING YOUR LOVED ONES
- PROTECTING YOUR PROPERTY
- INHERITANCE TAX PLANNING
- MORTGAGE SOLUTIONS

YOUR HOME MAY BE REPOSSESSED IF YOU DO NOT KEEP UP REPAYMENTS ON YOUR MORTGAGE.

THE VALUE OF PENSIONS AND INVESTMENTS CAN FALL AS WELL AS RISE AND YOU CAN GET BACK LESS THAN YOU INVESTED.

To learn more about how we can help please contact DANIEL EDMUND, Financial Planning Consultant on:

 07508 083128

 daniel.edmund@charlesderby.com

 www.charlesderby-danieledmund.com/

 CHARLES DERBY

Maiden Bradley Hall



Friday 8th March - come along for a sing-along!

Doors open 7pm for 7.30 showing

Friday 12th April - Bohemian Rhapsody (12)

Friday 10th May - A Star is Born (15)

Saturday 13th April - Military Wives Choir - Entrance £10

Coffee Mornings every Friday 10 - noon.

Come along for a cup of tea/coffee and a chat. Everyone welcome.

The Old Kitchen Community Store now open Mondays, Wednesdays and Fridays selling basic grocery items e.g. milk, cream, butter, biscuits, crisps, chocolate, tea, coffee etc. Opening times: 9am – 11.30am. Please note CASH ONLY.

Breaking News - Post Office services returning to Maiden Bradley for one afternoon per week. More details to follow next month.



2s 6d-a-time mansion was nearly a luxury hotel

HERALD REPORTER

TOMORROW the "perfect" Elizabethan mansion of Longleat, with its £500,000 store of art and literary treasures, will open its doors to the people—at 2s. 6d. a time.

Visitors can wander through rooms which Queen Elizabeth and most of the later rulers of England knew as guests of the Thynne family, which has lived in this Wiltshire mansion near Warminster since 1540.

There are rooms that Raleigh walked in. Richly furnished rooms that house the earliest volumes of Caxton.

The visitors half-crowns will be used by the owner, the Marquess of Bath, to help to pay for the upkeep of the mansion and hundreds of acres of woodland and parkland.

Turned down

Lord Bath originally intended to spend £250,000 to £300,000 on converting Longleat into a luxury hotel for overseas visitors in time for the 1951 Exhibition—an hotel where they would pay £80 to £100 a week.

"But the Board of Trade made inquiries at the American and other Embassies," Lord Bath told me yesterday, "and they thought it would be a risky project. So the Board refused a permit."

When Lord Bath returned after being wounded in the advance of the Royal Wiltshire Yeomanry at El Alamein, he put in hand extensive renovations to stop decay at Longleat.

Death-duty sale

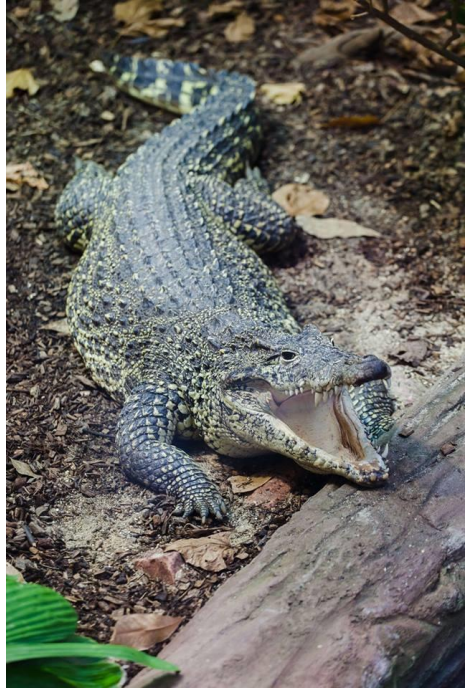
Death duties compelled him to sell a big part of the estate. He made his home in a small country house on the edge of Longleat Woods.

When I asked Lord Bath if he would ever live at Longleat House, he said: "Perhaps my son will."

Seventeen-year-old Lord Weymouth, heir to Longleat, is at Eton.

Crocodiles Come to Longleat

Another brand new species is a pair of two-metre-long Critically Endangered Cuban Crocodiles. As well as their colourful markings, the crocodiles are renowned for their athletic abilities; jumping high out of the water to catch birds and mammals from overhanging branches. The two females are part of an international conservation programme for the species. Their new semi-aquatic display will also be home to shoals of fish and, later in the year, dozens of brightly-coloured tropical butterflies.





BUSES FROM BUS STOP AT THE COMMON

Salisbury every Tuesday **83**

Leaves Horningsham 09.35 *Holly Bush 09.37* Arrives Salisbury 10.30
Departs Salisbury 13.45 Arrives Horningsham 14.45

Trowbridge every Thursday **81**

Leaves Horningsham 10.03 *Holly Bush 10.01* Arrives Trowbridge 10.55
Departs Manvers St Trowbridge 13.10 Arrives Horningsham 14.04

Warminster every Friday **82**

Friday leaves Horningsham 09.45 *Holly Bush 09.48* Arrives Warminster 10.10
Departs Warminster Coach Station 12.20

Frome every Wednesday & Thursday

Wednesday **80** leaves Horningsham 10.06 *Holly Bush 10.01*
Departs Cork St. Car Park 12.15 and 13.45

Thursday **81** leaves Horningsham 10.03 *Holly Bush 10.01*
Departs Frome Market Place 13.50

ADVERTISING RATES

¼ page £4.00 ½ page £8.00 Full Page £16.00

These apply to the inside pages of the magazine



BLACK AND YELLOW PAGES

Black Boxes	Thursday 14 th & 28 th March Thursday 11 th & 25 th April
Grey Bins	Friday 1 st , 15 th & 29 th March Friday 12 th & 26 th April
Blue Bins	Friday 8 th & 22 nd March Friday 5 th & 19 th April
Mobile Library	Tuesday 12 th & 26 th March Tuesday 9 th & 23 rd April <i>10.00 – 10.25 opposite the Hall</i>

Frome Hospital Minor Injuries		01373 454740
Community Police Officer	Vicky Howick	726818 ext 817
Wiltshire Police – non emergency		101
Neighbourhood Watch	Keith Shattock	844197
Horningsham School		844342
First Steps Nursery		844942
Village Hall Hire		07541 211732
Longleat Property Department		845535
Parish Council	Sarah Jeffries	213436
Congregational Chapel	Carol Cox	horningshamchapel@aol.co.uk
Horningsham Church Rector	Rev Pauline Reid	841290
Warminster District Link Scheme		211655
Mere Link Scheme		01747 860096
Stray or Fouling Dogs		0300 456 0100



Bric A Brac Wanted

Any saleable items are wanted for the Bric a Brac stall at the Village Fayre in June. If you are sorting out after Christmas, just phone me I can collect or deliver to 15 Gentle Street. I have plenty of storage.

Margaret Long 844756



THE BATH ARMS
COUNTRY PUB & ACCOMMODATION

Warm, welcoming
Wiltshire gastropub
with 18 rooms

THE BATH ARMS

Championing **the
finest regional ingredients**
in seasonal menus

Scenic spot for **cycling
and dog-walking** on the
cusp of Longleat Estate



www.batharms.co.uk • T: 01985 844 308

The Bath Arms at Longleat, Horningsham, Warminster, Wiltshire, BA12 7LY

   @thebatharms

*Cannot be used in conjunction with any other offer, or used on Christmas Day

(01985)
21 22 88



(01985)
21 22 15

FROM
SOMERSET

0800 542 5222

WARMINSTER
WILTSHIRE



**No Mole
No Fee
07512681111
01373836350**



LAKESIDE
garden centre



Everything for the garden.....with lakeside views.



CROCKERTON, WARMINSTER, WILTSHIRE 01985 217413 OPEN MON-SAT 8.30-5.30 SUN 10.30-4.30



www.fonthill-lakeside.com



WELLSTEADS Garden Maintenance

Pete Wellstead
07731359401
wellsteads@hotmail.com

STAR FISH BAR

3 BROXBURN ROAD WARMINSTER
TEL: 01985 217232

OPENING TIMES

LUNCHTIMES

MON 11.45AM - 1.45PM
TUES 11.45AM - 1.45PM
WEDS 11.45AM - 1.45PM
THURS 11.45AM - 1.45PM
FRI 11.45AM - 1.45PM
SAT 11.45AM - 1.45PM

EVENINGS

MON 4.45PM - 9.00PM
TUES 4.45PM - 9.00PM
WEDS 4.45PM - 9.00PM
THURS 4.45PM - 9.00PM
FRI 4.45PM - 9.00PM
SAT 4.45PM - 9.00PM

SUNDAYS, 4.30PM - 8.30PM



YOU NAILED IT CONSTRUCTION

younaileditconstruction@aol.co.uk

Telephone: 07785 457 843

Find us on Facebook

FORD FUEL OILS

www.fordfueloils.co.uk

The Oil Depot, Farrington Fields Trading Estate, Farrington Gurney, Bristol BS39 6UU

Tel: 01761 452222 Fax: 01761 453977

Email: admin@fordfueloils.co.uk

COMPUTER REPAIRS UPGRADES / SYSTEMS & LAPTOPS

VIRUS REMOVAL / BROADBAND
WIRELESS / NETWORKING



FAST, FRIENDLY, PROFESSIONAL SERVICE

COMPETITIVE RATES

ONSITE OR WORKSHOP



call

01373 302901

www.ntscomputing.co.uk

help@ntscomputing.co.uk

EMBERSON GENERAL BUILDERS

- Carpentry
- Brickwork
- Plastering
- Roofing
- Fencing
- Painting & Decorating

Over 15 years experience.

Call Tony On 07917 388408 For A

competitive quote.



Official Decl or Beauty Room
Massage Facials Holistic Treatments
In West Woodlands

Call Holly on 07557406609

www.happynessbeautyroom.co.uk

FOR ALL YOUR GARDEN NEEDS

CALL FLASH ON

01985 988578

MOBILE: 07840116119